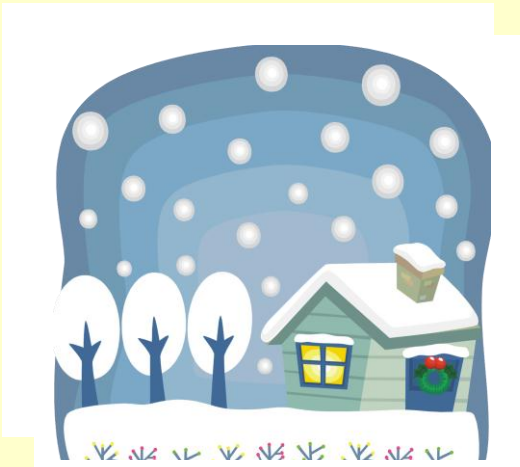


Directions

From South: Take I-77 North and follow to exit 111 (Portage St., Canal Fulton). Turn left and continue west on Portage St. until you reach Frank Ave.] Turn Left at the intersection onto Frank Ave. and continue to the second traffic light (entrance to college). Park in the visitor's parking lot right hand side of Student Services Center.

From North: Take I-77 South and follow to exit 111 (Portage St., Canal Fulton). Turn right and continue west on Portage St. until you reach Frank Ave. Turn left on Frank and go to second traffic light (entrance to college) Park in the visitor's parking lot right hand side of student Services Center.



EOHIMA Winter Symposium Saturday December 3, 2011 Stark State College Room S204-205



**DRAWING FOR EARLY
REGISTRATION!!!!**

Phone: 330-581-8654
sylvia.crider@aol.com

Welcome members and students.

Come and enjoy the great education that we will be receiving from our speakers as well as networking.

Agenda

8:00-9:00 Breakfast and Networking

9:00-10:00 Debbie Greenwalt

Alzheimer's and its diagnosis

10:00-11:00 Cindy Donelan, RHIA

Ways to improve DNFB (discharged not final billed).

11:00-12:00 Barb Vimont, RHIA

Telemedicine: Not Just for Radiology Anymore

Registration

Registration can be done before meeting and will also be available at the meeting.

Membership Dues:

\$15-Active Member

Students-Free

Cost of Symposium

\$25.00 for 3 CEU'S

To reserve your place, contact us at EOHIMA@gmail.com by Friday, December 2, 2011. **All RSVP's will be placed in a special drawing.**

Please inform us if you have a disability that requires special arrangements so that we may prepare for your specific needs.

Note: To receive current email blasts you must keep your email current through the AHIMA web site.

